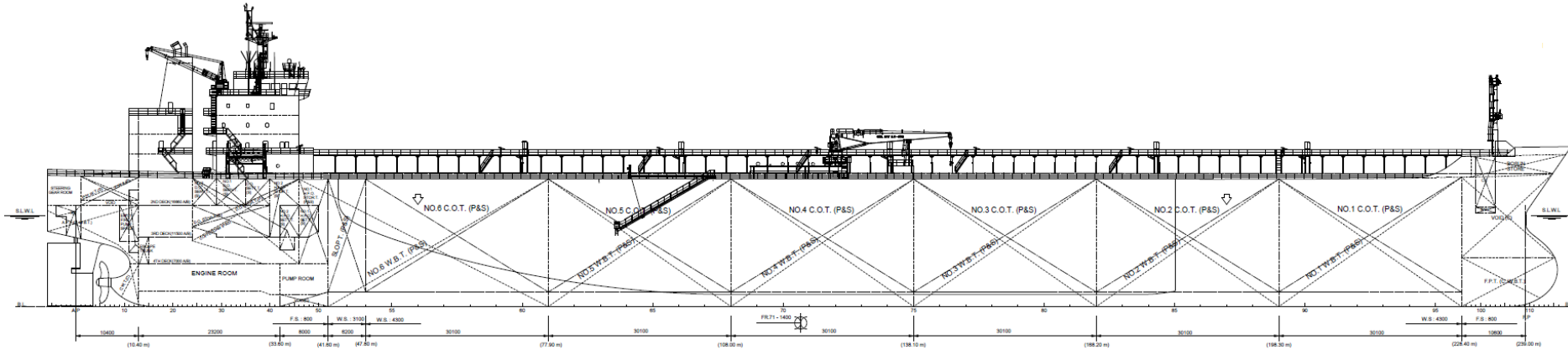


Liberty Class MT115 Tanker



Main Dimensions

Length overall	abt. 251.1 m
Length between perpendiculars	239.0 m
Breadth, molded	43.8 m
Depth, at side	21 m
Draft, design / scantling	abt. 13.6 / 15.0 m
Deadweight, at 13.6 / 15.0 m draft	abt. 120,520 / 134,350 t
Gross tonnage	abt. 61,200 t
Tank capacity	
Cargo	126,200 m ³
Slops	3,950 m ³
Cargo & slops	130,150 m ³
Ballast	39,900 m ³
HFO	1,700 m ³
MDO	1,260 m ³
Freshwater	220 m ³
Potable water	220 m ³
Lube oil	150 m ³
Speed, at 13.6 m, 85% MCR, 15% SM	abt. 15.0 kn
Radius of action ISO cond., 13.6 m, 15 kn	17,000 nm

Class

American Bureau of Shipping	+A 1(E), Oil/Chemical Carrier, CSR, AB-CM, ESP, +AMS, +ACCU, CPS, TCM SPMA, UWILD, VEC, GP, ENVIRO
Flag of Registry	United States of America

Equipment for Cargo

Cargo tanks	6 pairs & slops
Vertical Steam pumps	3 x 2,800 m ³ /h, 130 m TH
Unloading/loading capacity	8,400 m ³ /h

Ship's Equipment

Semi-balanced spade rudder	
2 combined anchor windlass / mooring winches	
6 mooring winches	
Lifeboat (freefall)	1x 36 pers.
Stores / provisions cranes	2 x 4 t SWL
Cargo hose handling crane	1x 15 t SWL

Machinery

Main engine	MAN-B&W 6S60M E-C8.2, 2-stroke, 6-cyl.
D.M.C.R	18,180 BHP (13,560 kW) at 105.0 RPM
N.C.R.	16,350 BHP (12,200 kW) at 1014 RPM
Propeller	1x Fixed pitch, 4-bladed
Diameter x pitch (0.7R)	7.25 x 4.96 m
Heat generating plant (steam)	
Auxiliary system	2 x 12.5 t/h
Exhaust gas (90% MCR, ISO)	1x 2 t/h
Diesel generator aggregates	3 x 960 kW at 900 RPM
Voltages for main consumers	440 V and 220 V, 60 Hz
Integrated automation system	
Ballast system	2 lines, 2 x 1,500 m ³ /h
Water firefighting system	
CO ₂ firefighting system	
Foam water spray system	

Accommodation

Complement, including pilot	28 + 6
-----------------------------	--------

Building the Future



part of Aker